

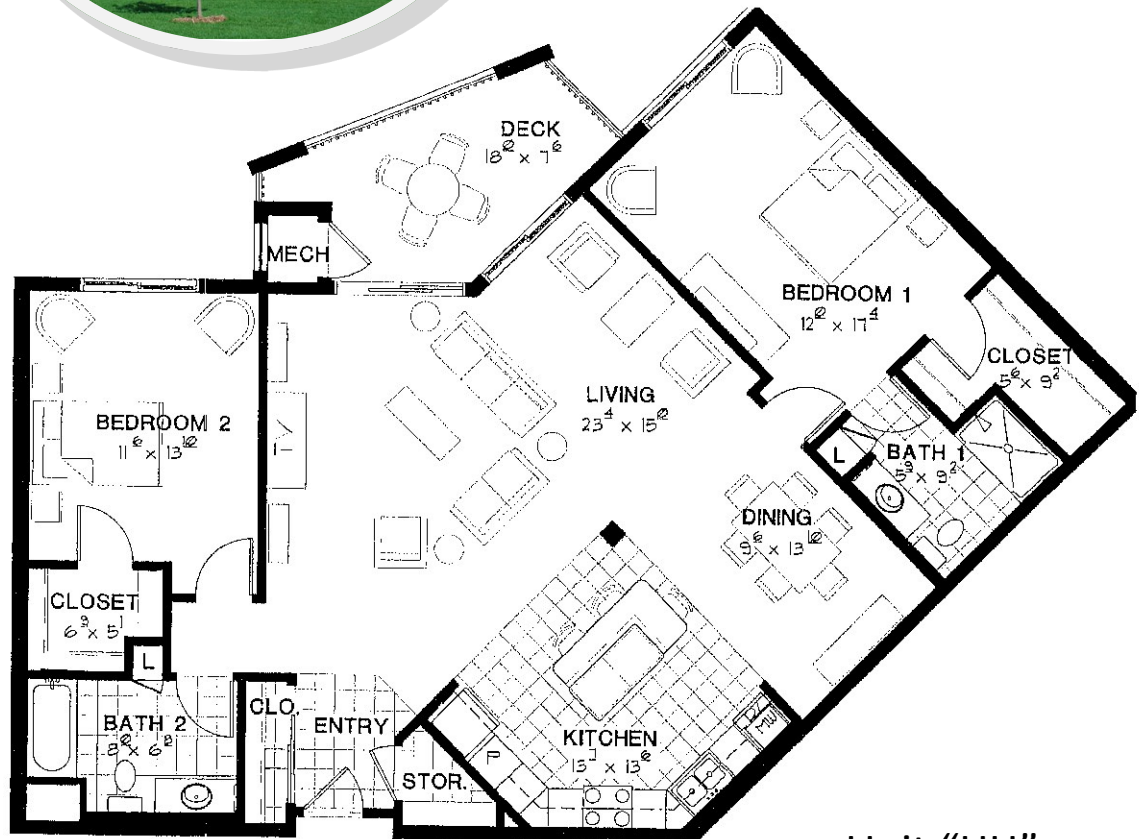
# East Terrace Cooperative



2155 - 6th Ln. SE  
Cambridge, MN 55008

763-552-0709

eastterracecooperative@gmail.com



Unit "HH"  
1452 sq. ft.

- ◆ Top Floor Unit
- ◆ Active Community Living for 55+
- ◆ Home Ownership Benefits Without Maintenance, Yard Work or Snow Removal (included with Monthly Carrying Charge)
- ◆ One Included Heated Garage Space Per Unit
- ◆ Spacious Laundry Rooms - 2 per floor; no extra cost
- ◆ Carwash, Library, Woodshop, Craft Room, Wellness Room
- ◆ Numerous Cooperative Events

**Unit # 301 - HH**

**Selling at Share Value = \$83,204**

**Monthly Carrying Charge= \$2071**

**Available NOW**